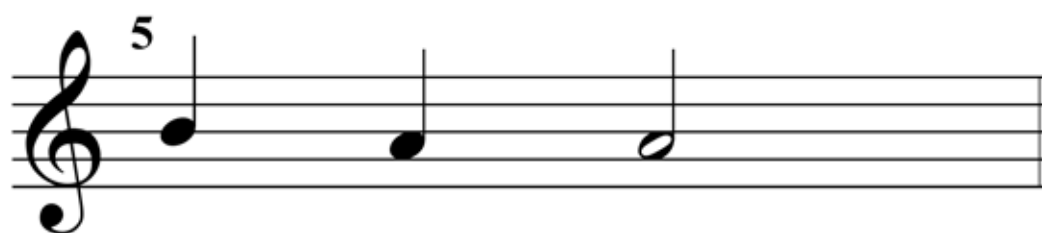
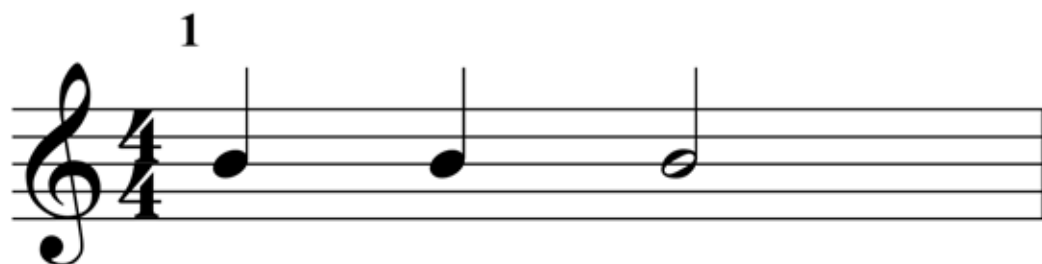




## Fife Notes 1



### My first tune



The image displays four musical staves, each with a treble clef. The first staff contains a sequence of notes: G4, A4, B4, C5, B4, A4, G4, followed by a fermata. The second staff contains: G4, A4, B4, C5, B4, A4, G4, F4, E4, D4, C4. The third staff contains: G4, A4, B4, C5, B4, A4, G4, F4, E4, D4, C4. The fourth staff contains: G4, A4, B4, C5, B4, A4, G4, F4, E4, D4, C4. The notes are represented by solid black circles, with some notes in the third and fourth staves having a white half-circle on the left side, possibly indicating a specific articulation or a different note type.









